



CYDWINDER 1800

SIDE-MOUNT ANTENNA POSITIONER

INTRODUCTION

CYDWINDER (side-winder) increases utilization of existing towers making it a cost effective solution for multiple antenna stations.

You can install multiple mono-band yagis at optimum operating heights, stack yagis for extra gain, or add an antenna for a new band on an existing tower.

DESCRIPTION

CYDWINDER mounts on a range of tower types using leg clamps. This system uses minimum tower space for easier and safer tower climbing.

Antenna movement is accommodated by a swinging mast which rotates through a 300 degree arc.

The mast is a standard two inch diameter which facilitates mounting an antenna using it's standard boom to mast plate. The mast may be extended for boom top guys.

The mast is supported by dual cantilever arms which are connected to the positioner's output shaft. Dual sealed roller bearings are used on the drive shaft.

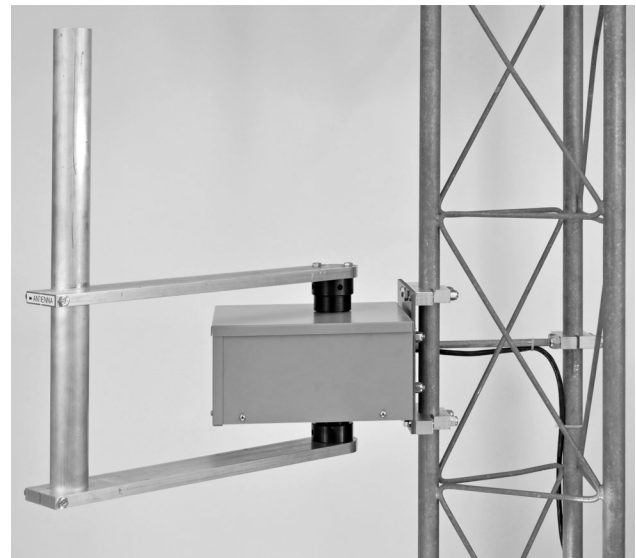
The output is driven by a sealed "wet" worm gear with lifetime synthetic lubricant. Power is a by high torque CNC type stepper motor.

Reliability is achieved by a solid design implemented with quality components and precision manufacturing techniques. Ruggedness and strength are assured through use of CNC machined components.

A companion controller, **CYTROL**, provides convenient desk top operation plus an interface for remote control by a station computer. Units may be slaved together for tracking of horizontal or stacked arrays.

CYTROL features intuitive operator controls. All operation is accessible by a single level menu. Operating parameters are programmable in precise digital increments.

With the **CYTROL** controller, accuracy is achieved by advanced motion control software. Precision acceleration/deceleration profiling minimizes tower, antenna and positioner stress.



Mounted on Rohn 25 tower

FEATURES

- 1,800 in/lbs torque
- 300° antenna rotation
- Antennas use standard boom to mast plate
- Top guy provision with mast extension
- All tower faces open (for climbing)
- Lifetime lubrication
- Brushless digital motor
- 0.1 degree setability
- Programmable accel/decel, speed and limits
- Point and shoot preset
- Slaved tracking with other **CYTORQ** models
- Serial interface

SPECIFICATIONS

General

Rotating torque in/lbs	1,800
Holding torque in/lbs	4,500
Ant size sq/ft	16
Vertical load lbs	500
Backlash arc/min	20

Environmental

Operating temp°C	-20° to +70
Humidity %	0 to 100
Altitude ft	- 200 to 10,000

Electrical

Cable	6 conductor (std rotor cable OK)
-------	----------------------------------

Physical

Size inches	9 H X 11 W X 14.5 D
Weight lbs	45
Construction	Steel enclosure, cast iron drive with steel gears Machined aluminum antenna mounting components
Finish (exterior)	Aluminum - natural Steel - powder coat paint or plated

*Specified at STP (standard temperature and pressure), 50 MPH average wind speed with 125% gust factor and 5% antenna wind imbalance (typical Yagi).

Specifications subject to change without notice or obligation.

ORDERING INFORMATION

Pricing - shown in US dollars (\$)

CYDwinder 1800 \$1449.00

Includes tower mounting brackets - specify tower model when ordering.

Requires **CYTROL** controller - see separate data sheet for description and pricing.

Contact factory for assistance on special requirements.

MADE in the USA by **ULTRALINK**, Inc.

PHONE 775 782 9758

FAX 775 782 0345

EMAIL info@ulio.com

WEBSITE www.cytorq.com

MAIL PO Box 1809 Minden, NV 89423

SHIP 1547 Anthony Ct. Gardnerville, NV 89410